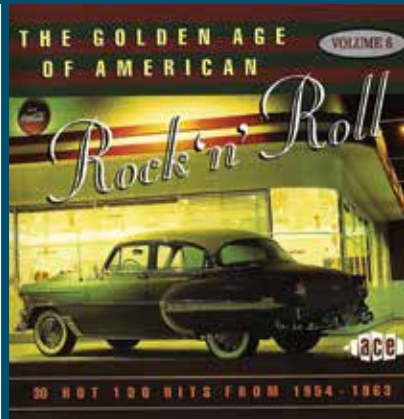
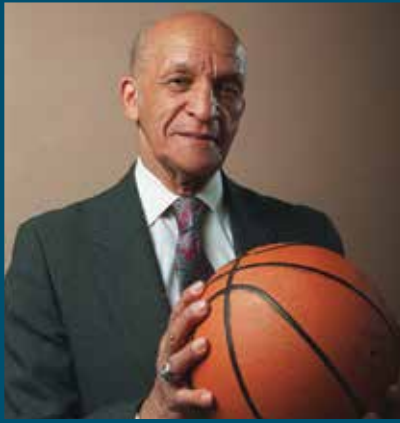


# Osher LIFELONG LEARNING INSTITUTE

AT THE UNIVERSITY OF KANSAS

## Spring 2021 Online

Enrichment short courses & special events specially developed for folks 50 and better.



No homework. No tests. No pressure. It's just learning for the joy of it!  
Enroll now at [osher.ku.edu](https://osher.ku.edu)!



**KU** LIFELONG  
& PROFESSIONAL  
EDUCATION  
The University of Kansas

## DEAR FRIENDS,

The pain of the pandemic is undeniable, and our hearts go out to anyone who has faced the loss of a loved one during this unprecedented time. COVID-19 has impacted all of us, most especially seniors. We realize the difficult



challenges that many have endured because of isolation, but time apart does not have to mean separating from what brings you joy.

The Osher Institute is honored to continue inspiring the love of learning through our quality educational enrichment programming. While we miss in-person activities, your health and safety are our utmost concern. As such, our spring semester will again be offered online via Zoom.

We are proud of each of you who said yes to your passion of lifelong learning and joined us on this incredible journey the past several months. Because of you, we nearly doubled our enrollment in the fall.

While we are thrilled with the increase, many of you have yet to join the online learning environment. I hope you will consider treating yourself to what you love this spring. The feedback regarding the Zoom experience has been incredibly positive! We know you will love it as well, and we're here to help ensure you are comfortable with the online environment. You don't have to do it alone. And remember, embracing change and trying something new is what lifelong learning is all about!

As we look to a new year, we are excited to announce a record-breaking accomplishment. This spring will include more selections than ever before! Thanks to our instructors, we have a terrific schedule of nearly 100 offerings, 46 of which are new courses. They celebrate a wide array of interests in history, literature, natural and social sciences, fine arts, the great outdoors and current events.

Our spring semester runs from January 11 through May 10. We are welcoming back many Osher favorites and also introduce 11 new instructors. Each course lasts 90 minutes, taught in three-week sessions. Our special events will vary on times. Please see the registration form for details.

Complete course and event descriptions and information on the instructors can be found at [lpe.ku.edu/osher-courses](http://lpe.ku.edu/osher-courses). For an email listing of courses, please reach out to me at [linda.k@ku.edu](mailto:linda.k@ku.edu). Due to a University holiday break, there will be no staff coverage and the contact center will be closed from December 24 - January 3. If you wish to register during that time, please visit us online.

We wish you peace and happiness during these challenging times. We look forward to gathering with you in person when it is safe for us to do so. Until then, keep your mind and body healthy and well and keep hope alive for brighter days ahead.

### Thank You To Our Partners

A special thank you to the Bernard Osher Foundation. Established in 1977 by Bernard Osher, it supports a network of 124 Osher Lifelong Learning Institutes across the U.S. to meet the needs of older learners who want to learn simply for the joy of it. Since 2007, the Foundation has awarded two \$1 million endowed grants to KU Lifelong & Professional Education. To learn more, visit [osherfoundation.org](http://osherfoundation.org).

Thanks to the following partners joining us this spring semester: Aldersgate Village, Brandon Woods at Alvamar, Clay County Senior Services, Colonial Village, Lenexa Parks & Rec, Village Shalom, Westchester Village of Lenexa.

Linda Kehres  
[linda.k@ku.edu](mailto:linda.k@ku.edu) | 785-864-1373

## A SPECIAL REQUEST FOR SUPPORT

The COVID-19 pandemic has caused much uncertainty in the lives of many, and the Osher Institute is no exception.

While we have adapted to meet the needs of our seniors, the Osher Institute has faced several financial challenges. Even though our Zoom enrollment continues to increase, we have lost tremendous revenue due to the inability to host in-person events. In addition, most of our partner sites are currently not hosting courses because of social distancing requirements.

In spite of this, we continue to meet our mission, but it's crucial we seek additional forms of revenue at this critical time.

As you may know, we rely heavily on course and event registrations and receive no state funding. We're asking for your help.

We strive to provide programs that engage, enlighten and entertain, and we know our courses and events not only enhance your life, but they also impact our community in a positive way, because lifelong learning enriches everyone's life.

### How to support the Osher Institute:

1. Enroll in several spring Osher online courses.
2. Encourage your friends and neighbors to enroll in Osher online courses.
3. Make a special financial gift to help the Osher institute recover from COVID-19. Your gift is tax deductible. Call 888-653-6111; or give online at [kuendowment.org/osher](http://kuendowment.org/osher).

Ask yourself, "Is Osher enriching my life?" If the answer is yes, please consider increasing your level of support today. Every gift counts; every gift helps.

## SNEAK PEEK INTO SPRING COURSES

An Osher favorite, **Mike Hoeflich**, presents his new course, "Recreating the Kansas Past: People, Buildings, and Other Stuff from Kansas History."

**Russ Hutchins** returns with two new courses, one of which is "Six U.S. Admirals of WWI."

The ever-popular **Janice Stuerzl** presents a new course, "Landscapes, Gardens, and Flowers in Art."

Longtime Osher instructor, **Don Dagenais** offers new courses including "Great Opera Scenes."

**Jim Peters**, Director Emeritus of the Osher Institute teaches several courses including a new one on Eleanor Roosevelt.

Professor Emerita **Diana Carlin** presents, "The Generals' Wives: How the Military Shaped the Role of First Lady."

**John Doveton** shares, "Dreamscapes and Crimescapes: Real Places in British Children's Classics and Detective Fiction."

Past State Rep. and previous House Minority Leader, **Paul Davis**, makes his debut with "An Up-close Perspective on the Kansas Legislature."

### Other highlights include:

"Critical Events in American Homeland Security Prior to 9-11."

"The Medical History of the American Presidency."

"Music and Art in the Baroque Era."

"Strauss, Steiff, Benz – Exploring the Lives and Times of Three Iconic German Innovators."

**For a complete list with course descriptions visit: [lpe.ku.edu/osher-courses](http://lpe.ku.edu/osher-courses)**

## WHAT PARTICIPANTS ARE SAYING

*"I LOVE YOUR CLASSES! Thank you so much for offering these classes they keep my sanity, and my brain is filled with other thoughts rather than the happenings around me."*

*"I found so many courses (nine at least) of interest! I have been very pleased with the instructors and classes. Classes via Zoom have been a bright spot in the middle of the pandemic."*

*"Thank you for your assistance in making our first Zoom class go well. You are very patient and professional."*

*"These times are baffling. Osher classes are a welcome respite."*

*"I know it has been tons of work to shift Osher from in-person learning to Zoom, but I am enjoying it. I think you have done a fantastic job."*

*"Convenience, a wide range of topics, and well-managed Zoom technology are reasons I have taken advantage of Osher courses. Attending via Zoom was easy, and it is a great way to learn and stay connected while safe at home."*

*"It is a blessing to have these classes. They are interesting and something to look forward to."*

*"Thank you for the Osher Institute. You are a great resource."*

*"This was the best Osher class we have taken! Kudos to all of you!"*

*"Because of the introduction of Zoom classes I am able to take advantage of your wide range of classes which otherwise would not be available to me. Thank you."*

*"Thank you! I appreciate all the hard work you do for the Osher Institute and education in general."*

*"What a great class, subject and instructor! I appreciated how the subject was so well organized. Thank you for all your hard work."*

## THREE EASY WAYS TO REGISTER

### Register Online

Visit us online at [lpe.ku.edu/osher-courses](http://lpe.ku.edu/osher-courses). If you have questions regarding using Zoom, please contact Linda Kehres at [linda.k@ku.edu](mailto:linda.k@ku.edu).

### Register by Phone

If you would like to register by phone, please call our Contact Center at 913-897-8530. Contact Center is closed December 24 - January 3.

### Register by Mail

Complete the enclosed registration form or visit [osher.ku.edu](http://osher.ku.edu) to download and print the registration form. Complete the form and mail with a check or money order to:

**KU Lifelong & Professional Education**  
12600 Quivira Road  
Overland Park, KS 66213

You are not registered until the registration form is received and processed and there is still room available in the selected course.

---

## ALUMNI ASSOCIATION DISCOUNTS

**Current members of the alumni associations at Kansas State University, Washburn University and the University of Kansas can receive a special \$10-per semester discount for courses.**

To receive your discount when you register for courses:

1. Enter your member ID number on the paper registration form;
2. Enter it in the appropriate field on the online registration form at [osher.ku.edu](http://osher.ku.edu); or
3. Call 913-897-8530 and provide your number to the Contact Center staff.

## FEES FOR OSHER INSTITUTE COURSES

The Osher Institute strives to keep fees as low as possible to help ensure more individuals are able to afford courses. We will once again offer all participants the ability to enroll in courses for a \$50 per course registration fee. The cost for special events will vary based on the specific offering.

### Zoom Course Participation

An individual registration is required for each person in the home, as Zoom links are not to be shared.

### Class Cancellation

Although unlikely, a class may be canceled due to underenrollment or other circumstance beyond the Institute's control. Members will be notified by email of any cancellation and have the option to transfer their registration to another course or request a refund.

### Refund Policy

If there is no stated deadline, a written or emailed request ([lpe@ku.edu](mailto:lpe@ku.edu)) for a refund will be honored up to one week before a course or special event begins. There will be a \$5 administrative fee. A \$30 fee will be charged for returned checks.

---

*Individuals with disabilities are encouraged to attend University of Kansas sponsored events. If you require a reasonable accommodation in order to participate in an event, please email [lpe@ku.edu](mailto:lpe@ku.edu) or call 913-897-8530 at least three weeks before the first day of the event. Some events may require notice earlier than three weeks and require you contact a specific individual; if so, that information is provided in the event-specific information.*



## WOULD YOU LIKE TO TEACH FOR THE OSHER INSTITUTE?

The Osher Lifelong Learning Institute is always looking for dynamic instructors who have a passion for teaching and enjoy continuous learning. Our members share a joy of learning that makes your love of teaching a mutually fulfilling experience. No grades, no tests, no homework—just the pleasure of sharing your knowledge and experience with those who will greatly appreciate it.

I invite you to join the Osher family and experience the joy of giving to a community of lifelong learners who will appreciate you as a teacher and value you as a new member of our community. If you are interested, please contact me. I look forward to hearing from you.

Linda Kehres  
Director, Osher Lifelong Learning Institute at KU  
[linda.k@ku.edu](mailto:linda.k@ku.edu)  
785-864-1373

## OSHER GIFT CARDS: GIVE THE JOY OF LEARNING



A gift card to the Osher Lifelong Learning Institute at KU offers a unique opportunity to enrich the life of that special someone, a family member or good friend. With an Osher Institute gift card, you open the worlds of art, music, science, history and a wide variety of special events.

A \$50 gift card allows your recipient an opportunity to enroll in one of Osher's courses or apply the money toward a special event specially developed for folks 50 or better. No homework. No tests. No pressure. It's learning just for the joy of it!

With your gift order, the recipient will receive a handsome card announcing your gift and acknowledging you as the donor (you can give anonymously, too). A catalog will follow shortly thereafter listing the forthcoming courses and events.

It's a unique gift idea that is easy and fun.

**Call today!**  
**913-897-8530**

# PART I OSHER SPRING 2021 REGISTRATION (one registration form per person)

## A. TELL US ABOUT YOURSELF (please print)

Full name (First, MI, Last, Suffix) \_\_\_\_\_ Preferred name \_\_\_\_\_

Email \_\_\_\_\_ Daytime phone (\_\_\_\_\_) \_\_\_\_\_

Address \_\_\_\_\_ City, State, ZIP \_\_\_\_\_

Date of birth \_\_\_\_\_  Male  Female

Are you a US Citizen?  Yes  No \_\_\_\_\_ If no, country of citizenship: \_\_\_\_\_

Name of my residential community, if applicable \_\_\_\_\_

**Note:** If you live at a residential community, please check with them **prior** to registering for a course to determine if an arrangement has been made with Osher.

## B. ONLINE COURSES Central Standard Time (CST)

### Course Title (Each 3 weeks) Start Date and Time (CST)

- The Generals' Wives . . . . . Jan. 19; 9:30 a.m.
- Dreamscapes & Crimescapes. . . . . Jan. 19; 1 p.m.
- Men & Women of the Early American Republic. . . . . Jan. 19; 1 p.m.
- The French Revolution: "Vive la Republique!"  
& "Madame Guillotine" . . . . . Jan. 19; 3 p.m.
- German Settlements & Culture in Kansas . . . . . Jan. 19; 5:30 p.m.
- More Kansas Characters . . . . . Jan. 20; 9:30 a.m.
- KU's Founders: Buccaneer, Naturalist, Wild Child . . . . . Jan. 20; 1 p.m.
- Native American Art & Its Interpretation . . . . . Jan. 20; 3 p.m.
- Tell It Again: Recounting Stories of Our Lives. Jan. 20; 5:30 p.m.
- Six U.S. Admirals of WWI. . . . . Jan. 21; 9:30 a.m.
- Nine Poets to Change Your Life. . . . . Jan. 21; 1 p.m.
- John Brown in Kansas. . . . . Jan. 21; 3 p.m.
- Civil War in Mo. & Kan.: Price's Rail in 1864 . . . . . Jan. 21; 5:30 p.m.
- Eleanor Roosevelt: Private Struggles  
& Public Triumphs. . . . . Jan. 22; 9:30 a.m.
- Modern Classics: Contemporary Music Today . . . . . Jan. 22; 1 p.m.
- Tales of the Atlantis . . . . . Jan. 22; 3 p.m.
- Impact of Transcendentalism. . . . . Jan. 22; 5:30 p.m.
- Welcome to Canada: An Intro for Americans. Jan. 25; 9:30 a.m.  
*(Clay Country residents \$15)*
- Music & Lives of the Great Composers, Pt. 3. . . . . Jan. 25; 5:30 p.m.
- The Poetry of Robert Burns . . . . . Feb. 8; 1 p.m.
- AI & the Fourth Industrial Revolution. . . . . Feb. 8; 3 p.m.
- Great Opera Scenes . . . . . Feb. 9; 9:30 a.m.
- Leonard Bernstein (1918-1990) . . . . . Feb. 9; 1 p.m.
- How Great Works of Art Are Made . . . . . Feb. 9; 3 p.m.
- Ghost Towns of Kansas . . . . . Feb. 9; 5:30 p.m.
- The Psychology of Grief & Loss. . . . . Feb. 10; 9:30 a.m.  
*(Clay Country residents \$15)*
- Exploring the British Northern Isles . . . . . Feb. 10; 1 p.m.
- The Ancient Psalms: A Lenten Companion . . . . . Feb. 10; 3 p.m.
- Duke of Wellington & Emergence of the  
British Century. . . . . Feb. 10; 5:30 p.m.
- The Underground Railroad in NE Kan. . . . . Feb. 11; 9:30 a.m.
- President Abraham Lincoln & CSA President Jefferson  
Davis: A Comparison. . . . . Feb. 11; 1 p.m.  
*(Aldersgate Village residents no charge)*
- Dawning of a New Day: 50s Integration of MLB . . . . . Feb. 11; 3 p.m.
- Military Aviation in the 20th Century. . . . . Feb. 11; 5:30 p.m.
- The Bible & Science . . . . . Feb. 12; 9:30 a.m.
- iPhone Photography Beyond Point-and-Shoot . . . . . Feb. 12; 1 p.m.
- US Citizenship: What's Hot & What's Not. . . . . Feb. 12; 3 p.m.
- An Up-close Perspective on Kan. Legislature. . . . . Feb. 12; 3 p.m.
- Recreating the Kansas Past . . . . . Feb. 15; 9:30 a.m.
- Prohibition: the Noble Experiment. . . . . Feb. 15; 5:30 p.m.

### Course Title (Each 3 weeks) Start Date and Time (CST)

- Darwin's Influence on 20th century US Writers. . . . . Mar. 1; 1 p.m.
- Sacred Journey: History of  
Spiritual Autobiography, . . . . . Mar. 1; 3 p.m.
- Presidential Assassins: Driven to Kill . . . . . Mar. 2; 9:30 a.m.
- Why Beekeeping Matters: More than Just Honey. . . . . Mar. 2; 1 p.m.
- Arts & Culture of Edo Era Japan (1603-1868). . . . . Mar. 2; 3 p.m.
- Dolly Curtis Gann: Little Sister, Big Influence . . . . . Mar. 2; 5:30 p.m.
- Moral, Social & Political Pluralism in US Culture Mar. 3; 9:30 a.m.
- Voices of the Holocaust. . . . . Mar. 3; 1 p.m.
- First Person Pandemic Monologues . . . . . Mar. 3; 3 p.m.
- Presidents in Retirement: Extraordinary Lives. Mar. 3; 5:30 p.m.  
*(Clay Country residents \$15)*
- Context, Controversy, Confederacy in *Hamlet*. Mar. 4; 9:30 a.m.
- Music & Art in the Baroque Era . . . . . Mar. 4; 1 p.m.
- Introduction to Islam. . . . . Mar. 4; 5:30 p.m.
- Key Issues in Today's World . . . . . Mar. 5; 9:30 a.m.
- The Devil's Music: A Story About Rock 'n' Roll. . . . . Mar. 5; 1 p.m.
- Leonardo da Vinci: Shaping of an Artistic Genius. . . . . Mar. 5; 3 p.m.
- Strauss, Steiff, Benz: Three German Innovators Mar. 8; 5:30 p.m.
- Landscapes, Gardens & Flowers in Art. . . . . Mar. 22; 3 p.m.
- Life of the Planet. . . . . Mar. 23; 9:30 a.m.
- Witches in Popular Culture . . . . . Mar. 23; 1 p.m.
- Hist. & Dev. of Western Books as Literary Genre. Mar. 23; 3 p.m.
- Predicament of Possessions in Later Life. . . . . Mar. 23; 5:30 p.m.
- Distinctive Cattle Culture of the Flint Hills . . . . . Mar. 24; 5:30 p.m.
- Sympathy for the Devil's Music . . . . . Mar. 25; 1 p.m.
- Personalities of the American Revolution . . . . . Mar. 25; 5:30 p.m.
- Visions of the Future: Utopias & Dystopias . . . . . Mar. 26; 3 p.m.
- Quest to Merge with the Ultimate:  
World Mysticism . . . . . Mar. 26; 5:30 p.m.
- Critical Homeland Security Prior to 9/11. . . . . Mar. 29; 5:30 p.m.  
*(City of Lenexa residents no charge)*
- Religion in Colonial America. . . . . Apr. 12; 3 p.m.
- "King" Coal in Kansas . . . . . Apr. 13; 1 p.m.
- The Life and Wars of Robert E. Lee . . . . . Apr. 13; 3 p.m.
- Exploring Reality Beyond Physics:  
Great Western Philosophers. . . . . Apr. 13; 5:30 p.m.
- Medical History of the American Presidency . . . . . Apr. 14; 1 p.m.
- Personal Journey Down Ark. River & Its impact . . . . . Apr. 14; 3 p.m.
- More Voices of The Willows . . . . . Apr. 14; 5:30 p.m.
- The Lost Gospels of Early Christianity. . . . . Apr. 15; 1 p.m.
- The Rising Popularity of STEM. . . . . Apr. 15; 3 p.m.
- Your Space Enabled Life . . . . . Apr. 15; 5:30 p.m.
- The History of the U.S.-Mexico Border. . . . . Apr. 16; 1 p.m.
- International Travel. . . . . Apr. 26; 1 p.m.
- Secrets Behind a Smile and a Pose . . . . . Apr. 26; 3 p.m.

# PART II OSHER SPRING 2021 REGISTRATION *(continued)*

## C. ONLINE SPECIAL EVENTS *Central Standard Time (CST)*

For event descriptions visit: [lpe.ku.edu/osher-special-events](http://lpe.ku.edu/osher-special-events) *(Special events are not considered courses.)*

- Leonardo da Vinci's Hidden Message: Leonardo's Knots;** Monday, Feb. 1, 1-2:30 p.m. ....\$25
  - Theatre Lawrence Presents: Are You Now or Have You Ever Been;** Friday, Feb. 5  
Pre-Event 6:30 p.m.; Show 7:30 p.m..... \$30
  - Celebrating the Legacy of Judge Isaac Franklin Bradley, Sr.;** Monday, Feb. 22, 1-2:30 p.m. ....\$25
  - Dole Institute - Kansans at the Crossroads: The 1960s;** Monday, Feb. 22, 3-4:30 p.m. ....\$25
  - The Santa Fe Trail at 200 Documentary;** Monday, Apr. 5, 5:30-7 p.m..... \$30
  - Crystal Bridges Museum of American Art Virtual Guided Tour and  
Exclusive Presentation with Janice Stuerzl;** Tuesday, May 4, 1-2:30 p.m. .... \$30
- Osher & Lied Center Collaborative Gift To You** *Made possible by KS Creative Arts Industries Commission & National Endowment for the Arts grant. Stay tuned for additional shows at [lpe.ku.edu/osher-special-events](http://lpe.ku.edu/osher-special-events).*  
Times: 6:30 p.m. Pre-performance Talk; 7:15 p.m. Livestream Performance .....**FREE**
- Ashley Davis Writing Celtic Music; Jan. 13**
  - Spencer & Rains Folk Art & Old Time Music; Jan. 20**
  - Vanessa Thomas: From Clay Center KS to Carnegie Hall; Jan. 28**

**SUBTOTAL \$ \_\_\_\_\_**

## D. SCHOLARSHIPS

- Clay County residents, age 60+ (\$15 per course only applicable on 3 specific courses indicated on front): \_\_\_\_\_ number of courses (x \$15) = \$ \_\_\_\_\_
- Lenexa residents (\$0 only applicable on 1 specific course indicated on front; \$50 for other courses)  
\_\_\_\_\_ # of courses (x0) = \$ \_\_\_\_\_      \_\_\_\_\_ # of courses (x50) = \$ \_\_\_\_\_
- Aldersgate residents (\$0 only applicable on 1 specific course indicated on front; \$50 for other courses)  
\_\_\_\_\_ # of courses (x0) = \$ \_\_\_\_\_      \_\_\_\_\_ # of courses (x50) = \$ \_\_\_\_\_

**SUBTOTAL \$ \_\_\_\_\_**

## E. INDIVIDUAL OSHER COURSE FEES *(\$50 per course, per person)*

\_\_\_\_\_ Number of courses ( x \$50 ) = **SUBTOTAL \$ \_\_\_\_\_**

## F. ALUMNI ASSOCIATION DISCOUNT *(Discount is for courses only.)*

*(Member # \_\_\_\_\_)* .....-\$10  
Choose only one:  KU  KSU  Washburn

**SUBTOTAL \$ \_\_\_\_\_**



### Be a Friend of Osher. Please contribute to our campaign.

- \$50** Supporter
- \$75** Patron
- \$100** Benefactor
- \$250** Sponsor
- \$500** Trustee
- \$1000+** Regent
- Other \$ \_\_\_\_\_

**SUBTOTAL \$ \_\_\_\_\_**

**Add SUBTOTALS for total payment..... GRAND TOTAL DUE \$ \_\_\_\_\_**

**Check enclosed**, payable to the University of Kansas.

**Credit Card.** For security reasons, KU cannot accept credit card information written on the registration form. If you wish to pay by credit card, please call our Contact Center at 913-897-8530.

**Mail** Osher Institute, Registrations, 12600 Quivira Rd., Overland Park, KS 66213

**Note: The Contact Center is closed Dec. 24 - Jan. 3.**

*Individuals with disabilities are encouraged to attend University of Kansas sponsored events. If you require a reasonable accommodation in order to participate in an event, please email [lpe@ku.edu](mailto:lpe@ku.edu) or call 913-897-8530 at least three weeks before the first day of the event. Some events may require notice earlier than three weeks and require you contact a specific individual; if so, that information is provided in the event-specific information.*

# HOW TO BECOME A FRIEND OF OSHER

The Friends of Osher is a special group of people who donate funds to support the Osher Lifelong Learning Institute at the University of Kansas. They recognize that the accessible, low-cost educational opportunities offered by the Osher Institute enrich the lives of adult learners. They also help us expand our programming and add new sites for courses and special events. Will you join them?

Contributions to the Friends of Osher benefit our community and the Osher Institute by:

- Helping keep Osher's tuition and fees low
- Enabling more people to attend our courses and events
- Continuing our efforts to attract highly qualified instructors
- Expanding into areas in need of lifelong learning opportunities
- Maintaining the technology we need to sustain the quality of our programming

Every contribution helps. Please become an Osher Business Friend today.

- Supporter .....\$50-\$74
- Patron .....\$75-\$99
- Benefactor ....\$100-\$249
- Sponsor .....\$250-\$499
- Trustee.....\$500-\$999
- Regent.....\$1,000+

It's easy to contribute. You can make your donation by completing the registration form; by calling toll free 888-653-6111; or going online to [kuendowment.org/osher](http://kuendowment.org/osher).

If you wish to be included as a leading Osher Business Friend in the Osher catalog, please contact Linda Kehres at [linda.k@ku.edu](mailto:linda.k@ku.edu) or 785-864-1373.

## Planned Giving: Become a Legacy Friend of Osher

Planned giving is a way for you to leave a legacy of lifelong learning to ensure that future learners will have the opportunities for



From the Osher photo archives

intellectual engagement that are now enriching your life through the Osher Institute at KU.

What is planned giving? Planned giving is finding ways to make charitable gifts now or after your lifetime while enjoying financial benefits for yourself.

Planned gifts are sometimes referred to as "stop-and-think" gifts because they require some planning and may require help from your professional advisors. Unlike cash donations, they are typically made from assets in your estate rather than disposable income, and come to fruition upon your death.

Planned gifts include:

- A bequest in your will or living trust
- A charitable gift annuity
- A charitable lead trust
- An endowment fund
- Retirement plan assets
- Life insurance policies
- A remainder interest in your home

A misconception is that planned giving is only for the "wealthy." The truth is, even people of modest means can make a difference through planned giving.

To learn more, call Andy Morrison at 785-832-7327 or email [amorrison@kuendowment.org](mailto:amorrison@kuendowment.org) to learn how you can support Osher's mission while ensuring your family's financial security.

## Support The Osher Institute and Save Money!

Do you have an IRA and are 70½ or older? Are you concerned about how your Required Minimum Distribution (RMD) will affect your taxes? Would you like to support the Osher Institute?

If your answer is "yes," it may be a good time to take advantage of the IRA Charitable Rollover. Congress has made the Rollover legislation permanent, which allows you to transfer up to \$100,000 from your IRA each year to support the Osher Institute through KU Endowment.

Contact your IRA custodian before taking your distribution. This direct rollover should be made payable to KU Endowment in support of the Osher Lifelong Learning Institute. Call Andy Morrison at 785-832-7327 or email [amorrison@kuendowment.org](mailto:amorrison@kuendowment.org) to learn more.

*Osher*  
LIFELONG LEARNING INSTITUTE  
AT THE UNIVERSITY OF KANSAS

**Spring 2021  
Online**

Classes beginning  
January 11!



**Explore the world with the KU Osher Institute! Enjoy enrichment short courses specially developed for folks 50 and better.**

The University of Kansas Osher Lifelong Learning Institute offers exciting and engaging noncredit short courses and events developed for adult learners 50 and older. This spring, courses are three weekly 90-minute sessions, held online via Zoom.

**For information or to enroll, call 913-897-8530 or go online at [osher.ku.edu](https://osher.ku.edu).**